


## PRESENTATION OF A CRISIS CENTER IN NORWAY

### KRISESENTERET I SALTEN

#### SHELTER FOR VICTIMS OF DOMESTIC VIOLENCE

HERDIS MAGNUSSEN – CHILDREN'S CO-ORDINATOR  
WANJA J. SÆTHER – MANAGER



Secretariat of the Shelter  
Movement in Norway

---

---

---

---

---

---

---

---

## IDEOLOGY



THE SHELTERS FIGHTS ON SOCIAL-,  
GROUP- AND INDIVIDUAL LEVELS

- FOR EVERYONES RIGHT TO:

- RESPECT
- SAFETY AND SECURITY
- THE RIGHT TO HAVE THOUGHTS
- THE RIGHT TO EXPRESS,
- RELIGIOUS AND POLITICAL FREEDOM
- PRIVACY
- A LIFE WITH NO VIOLENCE AND ABUSE
- PROTECTION UNDER THE LAW
- WORK AND HEALTH

---

---

---

---


---

---

---


---

## OUR AREA



The hostmunicipality for the Crisis  
Centre in Salten - Bodo - works with  
13 municipalities, each pay  
deductible out of the population-  
number.

Together municipalities have a  
population of about 85.000 residents.



---

---

---

---

---

---

---

---

## KRISESENTERET I SALTEN

- The Crisis Centre offers services to people who have been exposed to violence and abuse.
- Our mission is to provide a caring, advocating, safe, and educationally based environment for survivors of domestic violence and sexual assault.
- The Crisis Centre is an ideologically based organization that shall combat any conditions in society that legitimizes, build or maintain violence against women - and now also men.
- The Shelter is politically neutral and not part of any organization or denomination.
- There is no requirement for referral (but requires pre-contact).

---

---

---

---

---

---

---

## KRISESENTERET

- *The Crisis Centre in Bodø was established in 1983.*
- *One of the Norway's 46 centres.*
- *The Crisis centre was a private organization until we were taken over by public authorities in 2011.*
- *Financed from the municipal budget.*
- *The Crisis centre has 15 employees .*

---

---

---

---

---

---

---

## WE OFFER:

- *Phone Service/ hotlines - information about rights, advice, guidance.*
- *Day care - advice, guidance, counselling.*
- *Housing for people in a crisis situation - help establish the new life situation.*
- *Following up in the rehabilitation phase.*
- *Dissemination of contact with other support services both in the host municipality and in users' home municipalities.*

---

---

---

---

---

---

---

## OUR WORK:

- Information to agencies and public authorities.
- Education intentionally to prevent and reduce violence and abuse in the community.
- Awareness-raising and preventive activities.

---

---

---

---

---

---

---

## WHO NEEDS US

- *"Everyone" who contact us has a need for help.*
- *"Everyone" we work directly with, has been subjected to mental abuse.*
- *Many have been victims of physical and sexual abuse, and have experienced material violence.*
- *Some have been assaulted in other ways*



---

---

---

---

---

---

---

## COOPERATION

- Doctor
- Police
- Social office
- Lawyer
- Home Office
- Child Protection System
- School
- Nursery
- Healthcare
- Refugee Service
- Church
- Advisor Office for Victims of Crime



---

---

---

---

---

---

---

## THE HOUSE

- Municipal housing
- 6 bedrooms
- The house is handicap accessible
- Offices
- Outdoor playground
- No official address
- Special deals for Men



From the children's room

---

---

---

---

---

---

---

---

## WHEN MEN ARE VICTIMS




---

---

---

---

---

---

---

---

## THE SHELTER




---

---

---

---

---

---

---

---



## FULL HOUSE!




---

---

---

---

---

---

---



## STATISTICS

(SOURCE: SENTIO RESEARCH)

	2010	2011	2012	2013	2014	2015
Women	27	33	28	39	33	26
Children	29	31	26	20	14	26
Day-clients	61	64	56	66	74	67
Consultations	294	343	211	271	244	241
Overnight stays - women	1485	1694	1513	1347	1574	1283
Overnight stays – children	1270	1552	1727	1070	829	1159
SUM	2758	3246	3240	2417	2403	2442

---

---

---

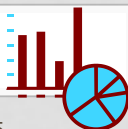
---

---

---

---

## NUMBERS



- 16 out of 26 (63 %) adult residents in 2015 were of foreign origin (kids 18 out of 26).
- Day users had in 2015 an average of 3,6 meetings each.
- Average length of stay per user in 2015 – was 49 days (19.5 days in 2008).

---

---

---

---

---

---

---

## LIMITATIONS

THE SHELTER IN SALTEN DO NOT  
PROVIDE HOUSING FOR:

- People with health challenges that require close monitoring
- People with serious drug problems
- Homeless people
- Children on their own




---

---

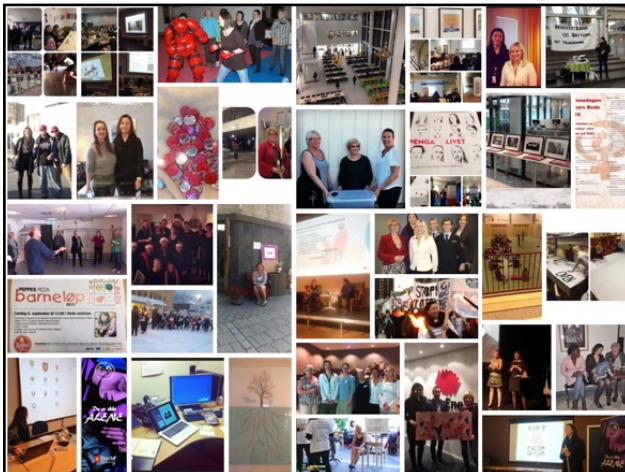
---

---

---

---

---




---

---

---

---

---

---

---

## FROM NEWSPAPERS




---

---

---

---

---

---

---

## 2320 BUTTERFLIES.....

(Exhibition to tell the story of all the women and children who came to the shelter...)




---

---

---

---

---

---

---

---

## TO HONOUR WOMEN'S FIGHT




---

---

---

---

---

---

---

---

## OUR BOOK



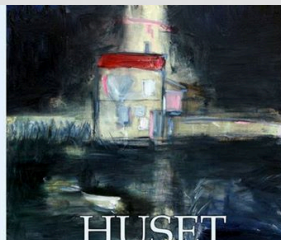
Mailen Evjen  
Tidlig udvandrering fra Oslo-familien i 1900.  
Grundlagt i kunsthistorie fra UNO  
Her tidligere gift et hus "MANNEN".

vi skal se enhver handling rettet mod en anden person, som gennem at denne handlingen skaber, smerte, skam eller tvang, for den anden personen til at gøre med sin vilje eller lader sig gøre med den vilje i 1900.

2320 mennesker har bodd på krisecenteret i Bode i de sidste 30 år. I tillegg har de modtaget utallige telefoner fra mennesker som har trængt råd og vejledning.

Kvinner og barn kommer inn i huset for å søke tilflukt, i noen tilfeller er det snakk om liv eller død. Men her det mer en periode, andre er innen for spørsmål. Det som er felles er at krisecenteret har en enorm betydning i livet til dem det gjelder.

I denne boken får du høre stemmene til noen av dem.



**HUSET**  
av  
Mailen Evjen

---

---

---

---

---

---

---

---

## 16 DAYS OF ACTION



The Campaign of 2015:  
Focus on how violence prevents  
women to participate in society

*The 16 Days of Action run from 25th November, UN International Day of Elimination of Violence against Women, to 10th December, Human Rights Day. The campaign highlight the link between violence against women and human rights. Today, women and girls are subjected to many forms of human rights violations solely on the basis of their gender.*

---

---

---

---

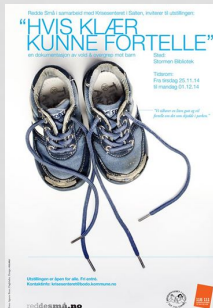
---

---

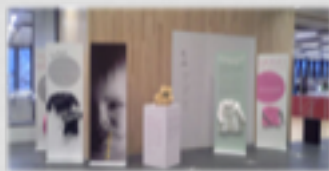
---

---

## EXHIBITION



*Children's clothes tell the story about violence and abuse.*




---

---

---

---

---

---

---

---

## INTERNET CAMPAIGN ABOUT PARTNERKILLING



**Taushet tar liv**  
Alle har et ansvar for å vite



Forbuds Den kampsengen Skolebarn Helsekommissjonen Helsebarnsnett Nettvernet Barns rett til liv

### TAUSHET TAR LIV

Et av fire drap i Norge er partnerdrap. Drapene skjer ikke ut av det blå. Noen voksne, noen så, noen gamle. I tillegg kjemmer det, Taushet tar liv.

Regjeringen gjør for lite for å forhindre partnerdrap. Vi trenger et løft i arbeidet med vold mot kvinner og vold i nære relasjoner, og at regjeringen etablerer en helsekommissjon for å forhindre at flere liv går tapt.

**Bli med å bryte tausheten. Du kan gjøre en forskjell.**

---

---

---

---

---

---

---

---

## FIND US ON FACEBOOK




---

---

---

---

---

---

---

---

## OUR WEBSITE [HTTP://KRISESENTERET.BODO.KOMMUNEN.O](http://krisensenteret.bodo.kommunen.no)




---

---

---

---

---

---

---

---

## AWARDS....




---

---

---

---

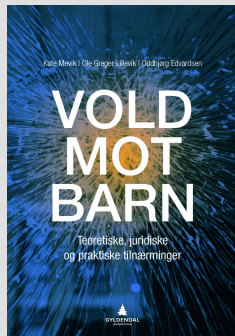
---

---

---

---

## A NEW BOOK




---

---

---

---

---

---

---

---

## CONFERENCES

**DE SÅRBARE FLYKTINGENE**  
Torodd L. Aasen

**KRISESENTERETS SKOLETURNÉ 2016**

TR	STED	PERSONAL/EMBEDER
19.08	OSLO	PERSONAL/EMBEDER
20.08	OSLO	PERSONAL/EMBEDER
21.08	OSLO	PERSONAL/EMBEDER
22.08	OSLO	PERSONAL/EMBEDER
23.08	OSLO	PERSONAL/EMBEDER
24.08	OSLO	PERSONAL/EMBEDER
25.08	OSLO	PERSONAL/EMBEDER
26.08	OSLO	PERSONAL/EMBEDER
27.08	OSLO	PERSONAL/EMBEDER
28.08	OSLO	PERSONAL/EMBEDER
29.08	OSLO	PERSONAL/EMBEDER
30.08	OSLO	PERSONAL/EMBEDER
31.08	OSLO	PERSONAL/EMBEDER

**13.09 - 14.09: ALLE SAMLES TIL Siste BIST**

Alle som har vært på skoleturné i år, kommer til Siste Bist. Det er en dag for alle som har vært på skoleturné i år, og det er en dag for alle som har vært på skoleturné i år.

**SE MEG!** 28. OKTOBER 2016  
SCANDIC HAVET BOOD

---

---

---

---

---

---

---

---

## FIGHTS




---

---

---

---

---

---

---

---

## "THE SHELTER" AND "THE BIRDHOUSE"




---

---

---

---

---

---

---

---



## NORWAY 2016:

- One out of four women experiences violence in their own homes.
- Every 12. woman is exposed annually for life-threatening violence - every year 80 000 women are exposed to so severe violence from their partners that it could have ended with death (Bufetat).
- About 4500 women and children comes every year to a Norwegian shelter because of men's violence. Approximately half of the residents in Norwegian's shelters are of foreign origin. Most of the perpetrators are their partners.
- Since year 2000, 135 women and 15 men were killed by their partners or former partners. Many children have because of this lost their mom. The last ten years more than 60 children under the age of 4 died in Norway of neglect, abuse or murder.

---

---

---

---

---

---

---

---



HOW CAN I DO ANYTHING ALL ALONE?

---

---

---

---

---

---

---

---

**THANK YOU!**



---

---

---

---

---

---

---