

EIGE's activities on Gender-Based Violence



Jurgita Pečiūrienė
European Institute for Gender
Equality



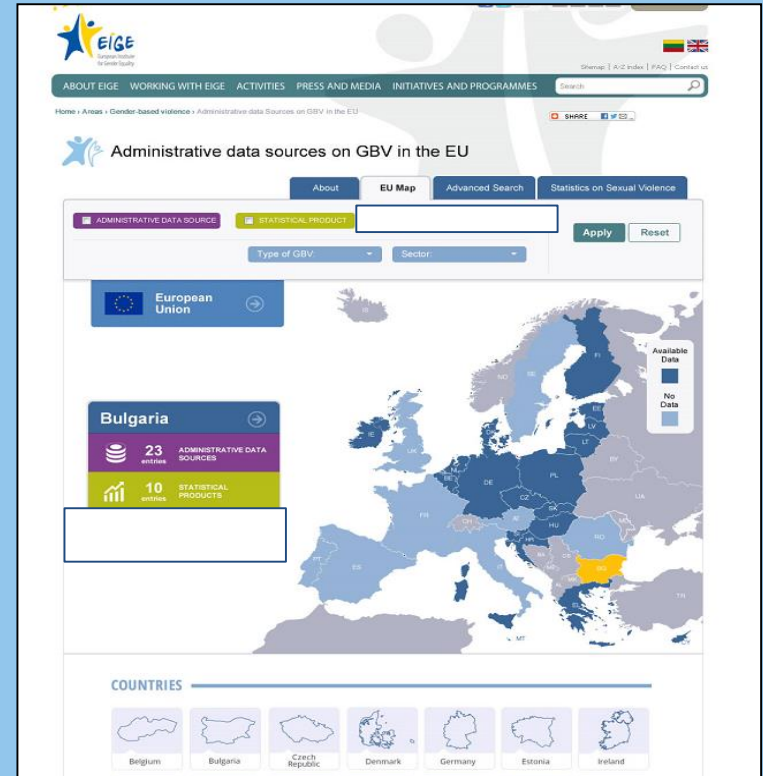
Online mapping tool and databases

EU Map

Country page

Administrative data source

Statistical product

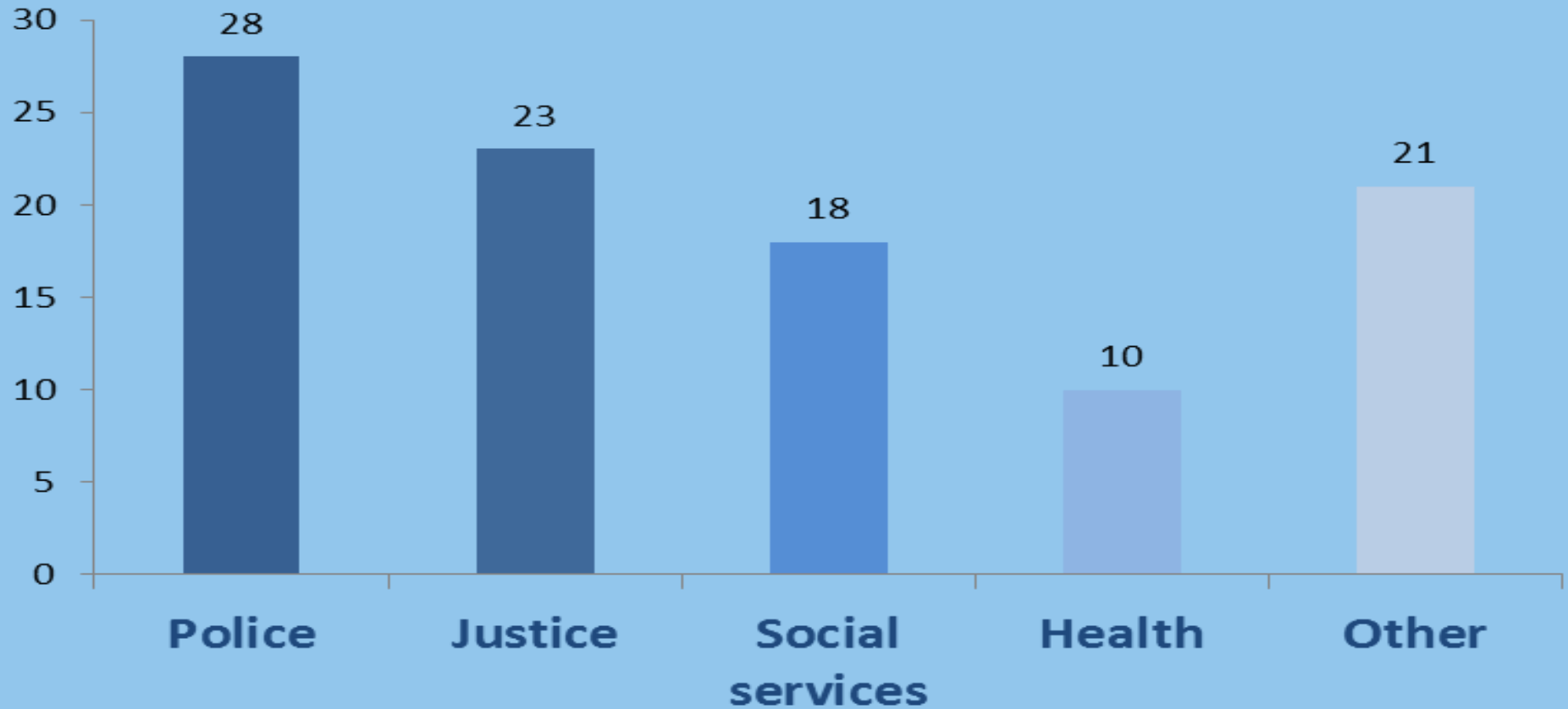


Legal definitions

Literature and
Legislation



Availability of administrative data



<i>Number of administrative data sources</i>	43	36	32	12	21
	Police	Justice	Social Services	Health	Other



Estimating the costs of gender-based violence in the European Union

Purpose of this study:

- **recommendations** for Member States:
how to calculate costs of GBV

Use of costing studies:

- rationale for **resource allocation**



Methodology

Review studies

Strengths

Weaknesses

Feasibility for EU-28 application

Develop EU-wide methodology

Data types

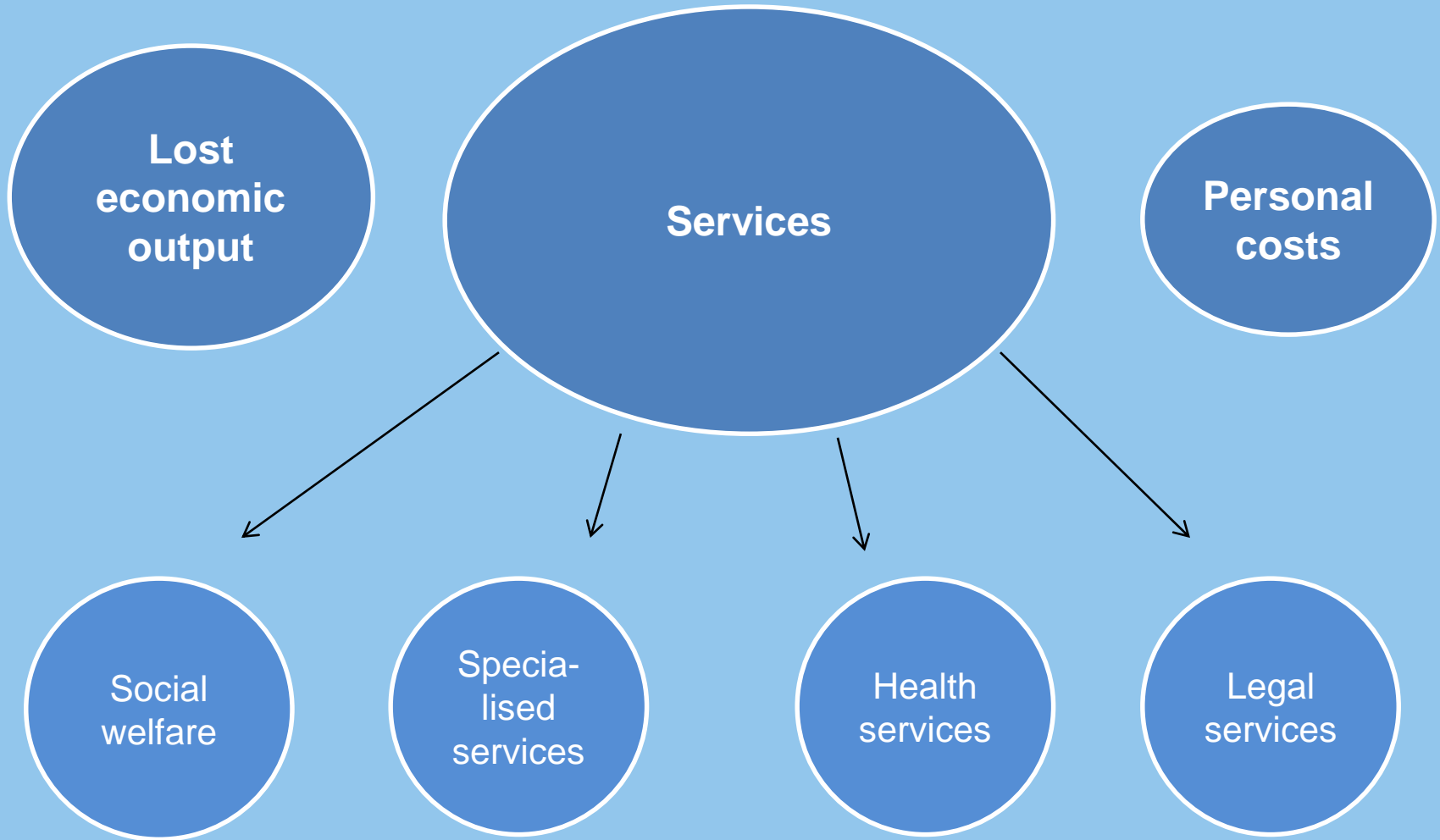
Data availability

Calculate costs

Case study (UK)

Extrapolate EU costs

Types of costs



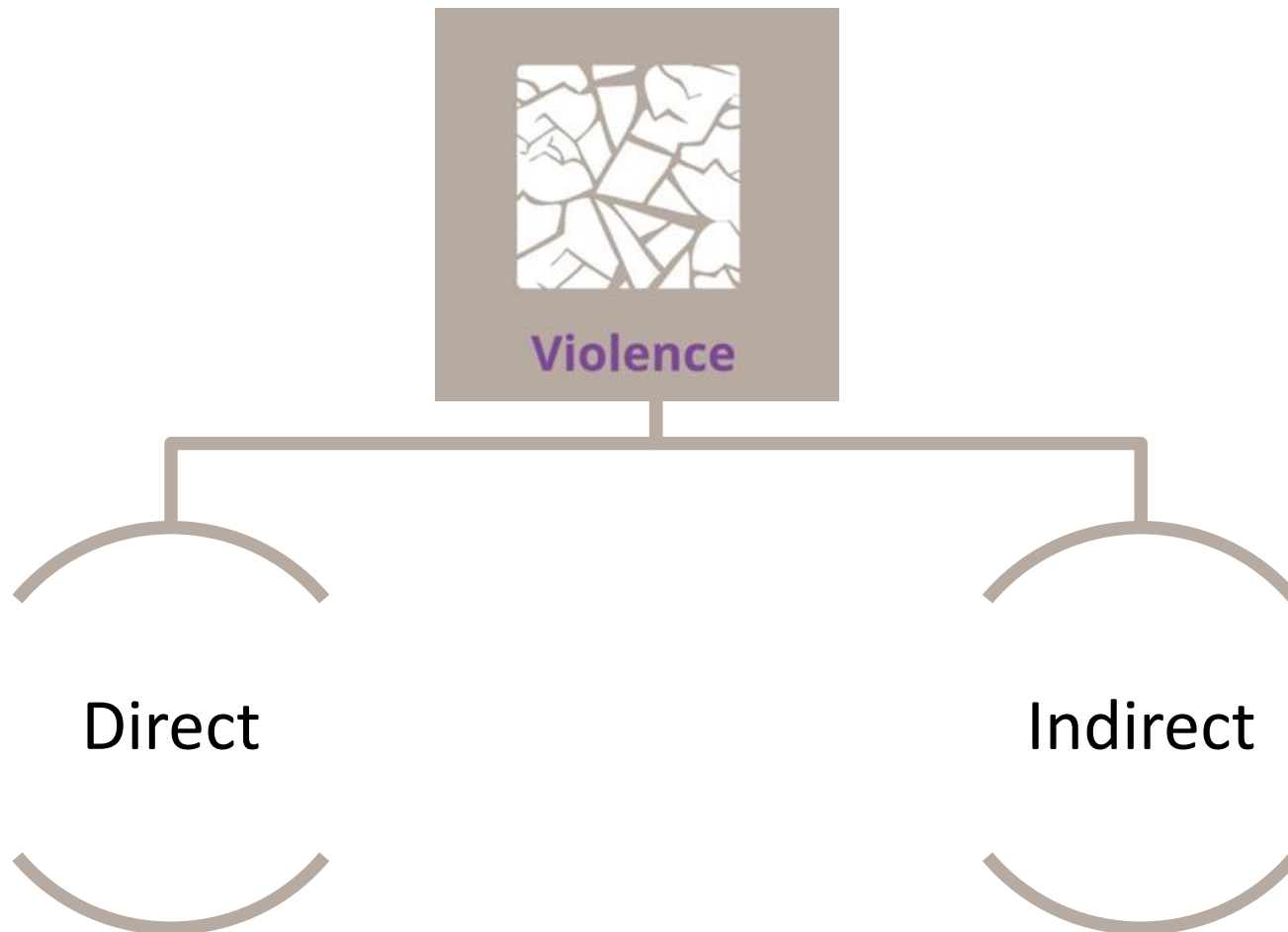
Main challenges

- **Lack of data** to measure:
 1. Extent of violence;
 2. Extent of service use;
 3. Public valuation of the physical and emotional impact
- Extent of employment losses
- **Underestimation**

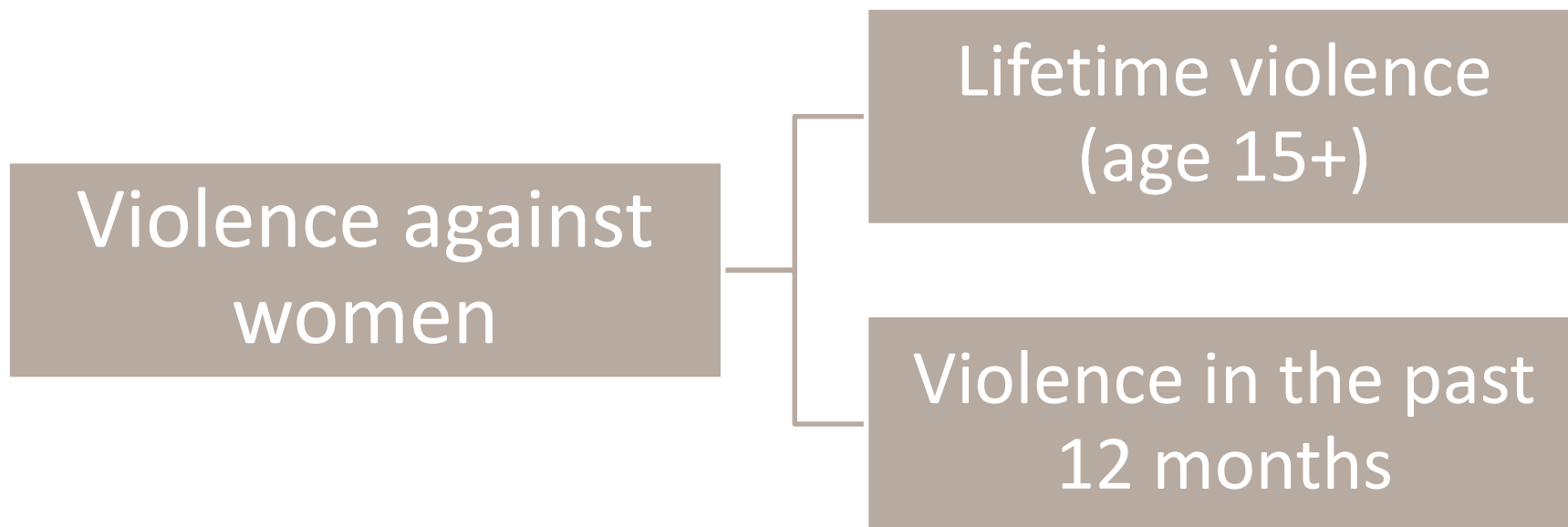
Methodological options for EU cost calculation

- **Indispensable:** common EU-wide methodology
- **Best option:** calculate costs from MS-specific data for each type of costs
- **Realistic option:** extrapolate costs from case study

Measuring Violence against Women



Structure of the measure



Indicators considered

Physical violence by a **partner** since the age of **15**

Sexual violence by a **partner** since the age of **15**

Sexual violence by a **non-partner** since the age of **15**

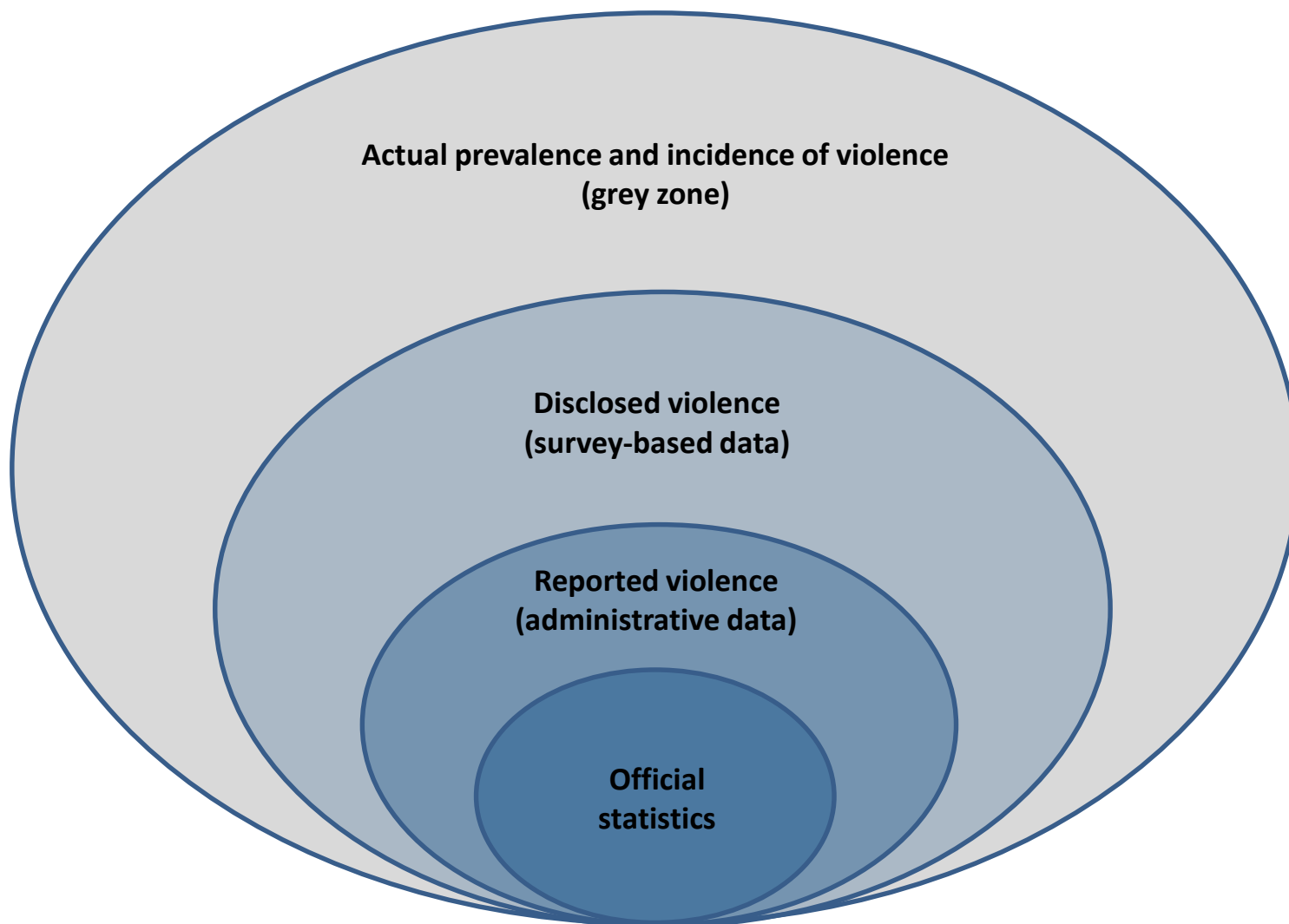
Psychological violence by a **partner** since the age of **15**

Physical violence by a **partner** in the **12 months** prior to the interview

Sexual violence by a **partner** in the **12 months** prior to the interview

Sexual violence by a **non-partner** in the **12 months** prior to the interview

Actual or disclosed prevalence?



EIGE's database on gender statistics

- Browsing trees -

- ↓ Thematic areas
- ↓ Policy areas
- ↓ EU strategies
- ↓ Gender Equality Index
- ↓ Beijing Platform for Action (BPfA)
- ↓ Women and men in decision making
- ↓ Gender-based violence (?)



Gender analysis of Victims' Directive

- from a gender perspective. The study is focused on the specificities of the Directive's implementation regarding gender-based violence
- recommendations to the MS on the possible Directive interpretation from a gender perspective in order to transpose the Directive in a way which benefits victims of gender-based violence

Jurgita Pečiūrienė – Gender Expert on Violence against Women

Jurgita.Peciuriene@eige.europa.eu

European Institute for Gender Equality (EIGE)

Gedimino pr. 16

LT- 01103 Vilnius

Lithuania

www.eige.europa.eu

